

# Union County: Children Services Profile

June 2024

## County Demographics 2023

<b>Population</b>		65,293
<b>Race</b>	White	87%
	African American	2%
	Multi-racial	5%
	Other	6%
<b>Ethnicity (% Hispanic)</b>		3%
<b>Child Population</b>		15,866
<b>Per Capita Income</b>		\$49,946
<b>Poverty Rate</b>	All Ages	5%
	Children	6%
<b>Grandparents Raising Grandchildren</b>		260

## Agency Response SFY 2024

<b>Reports Screened-In by Agency</b>		270
<b>By Type</b>	Physical Abuse	23%
	Neglect	12%
	Sexual Abuse	13%
	Emotional Maltreatment	2%
	Multiple Allegations	32%
	Family in Need of Services, Dependency, Other	17%
<b>By Category</b>	Abuse or Neglect (Traditional Response)	24%
	Abuse or Neglect (Alternative Response)	60%
	Dependency	6%
	Family in Need of Services	11%
<b>Cases Transferred to Ongoing</b>		31

## Children in Custody

	SFY 2023	SFY 2024	Change
Total in custody anytime during year	58	60	3%
Rate per 1,000 children	3.7	3.8	3%

## Permanency

Children who gained permanency through	SFY 2023	SFY 2024	Change
Reunification	4	18	350%
Guardianship	4	0	-100%
Custody to Relative	11	6	-45%
Adoption	4	4	0%
<b>Children waiting to be adopted</b>	9	8	-11%

## Youth Aged Out of Care

	SFY 2023	SFY 2024	Change
Number Aged Out	0	3	-

## Children Served

	On 7/1/2023		On 7/1/2024	
Total	94		115	
In Custody	35	37%	31	27%
In Home	59	63%	84	73%

## Profile of Children in Custody on 7/1/2024

### Gender

Female	39%
Male	61%

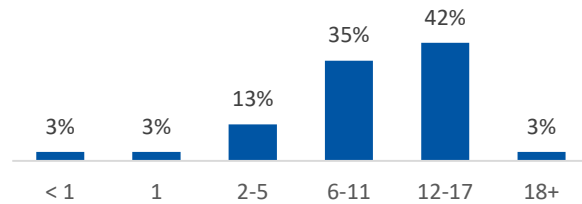
### Race

White	90%
African American	0%
Multiracial	10%
Other	0%

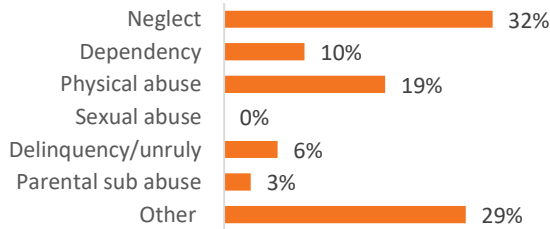
### Ethnicity (% Hispanic)

3%

### Age in Years



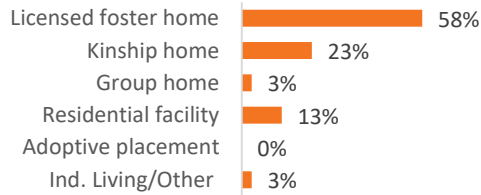
### Primary Reason for Removal



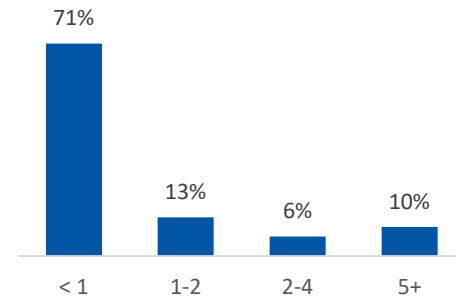
### Type of Custody

Temporary	84%
Permanent	13%
Planned Permanent Living Arrangement	3%

### Placement Type



### Years in Custody



## Profile of Children in Home on 7/1/2024

### Gender

Female	45%
Male	55%

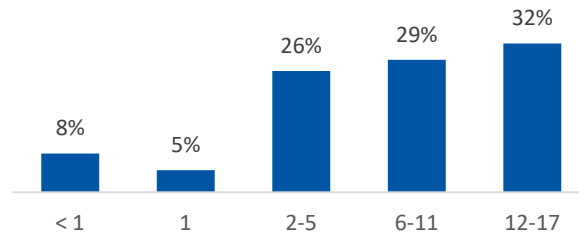
### Race

White	76%
African American	4%
Multiracial	15%
Other	4%

### Ethnicity (% Hispanic)

5%

### Age in Years



### Contact Information

Union County Human Services, 940 London Ave, Suite 1800,  
Marysville, Ohio 43040, (937) 644-1010

For data sources and notes, go to  
<https://www.pcsao.org/pdf/factbook/2024/Sources.pdf>