

Preble County: Children Services Profile

June 2024

County Demographics 2023

Population		40,802
Race	White	96%
	African American	1%
	Multi-racial	3%
	Other	1%
Ethnicity (% Hispanic)		1%
Child Population		9,099
Per Capita Income		\$35,232
Poverty Rate	All Ages	11%
	Children	17%
Grandparents Raising Grandchildren		472

Agency Response SFY 2024

Reports Screened-In by Agency		226
By Type	Physical Abuse	31%
	Neglect	18%
	Sexual Abuse	12%
	Emotional Maltreatment	1%
	Multiple Allegations	27%
	Family in Need of Services, Dependency, Other	9%
By Category	Abuse or Neglect (Traditional Response)	29%
	Abuse or Neglect (Alternative Response)	62%
	Dependency	3%
	Family in Need of Services	6%
Cases Transferred to Ongoing		36

Children in Custody

	SFY 2023	SFY 2024	Change
Total in custody anytime during year	126	104	-17%
Rate per 1,000 children	13.9	11.4	-17%

Permanency

Children who gained permanency through	SFY 2023	SFY 2024	Change
Reunification	30	13	-57%
Guardianship	1	0	-100%
Custody to Relative	15	10	-33%
Adoption	3	8	167%
Children waiting to be adopted	28	29	4%

Youth Aged Out of Care

	SFY 2023	SFY 2024	Change
Number Aged Out	3	5	67%

Children Served

	On 7/1/2023		On 7/1/2024	
Total	113		84	
In Custody	73	65%	69	82%
In Home	40	35%	15	18%

Profile of Children in Custody on 7/1/2024

Gender

Female	59%
Male	41%

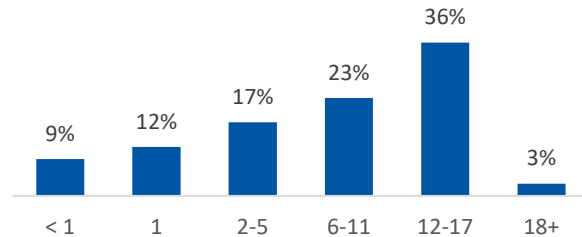
Race

White	84%
African American	9%
Multiracial	7%
Other	0%

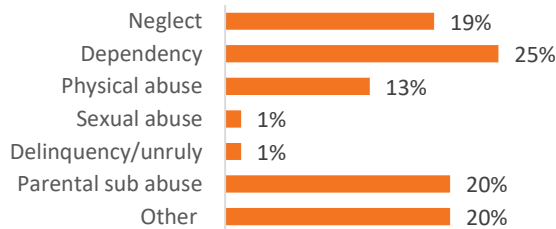
Ethnicity (% Hispanic)

3%

Age in Years



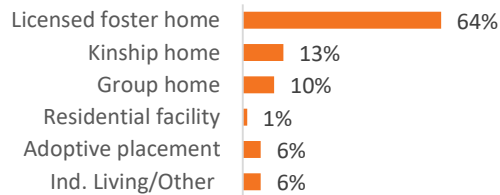
Primary Reason for Removal



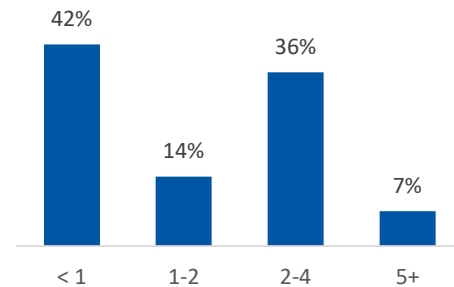
Type of Custody

Temporary	54%
Permanent	46%
Planned Permanent Living Arrangement	0%

Placement Type



Years in Custody



Profile of Children in Home on 7/1/2024

Gender

Female	40%
Male	60%

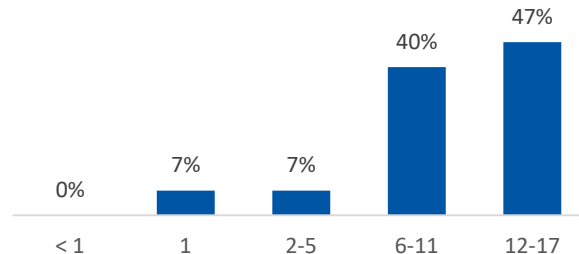
Race

White	93%
African American	7%
Multiracial	0%
Other	0%

Ethnicity (% Hispanic)

0%

Age in Years



Contact Information Preble County Job & Family Services, 1500 Park Ave, Eaton, Ohio 45320, (937) 456-6205

For data sources and notes, go to <https://www.pcsao.org/pdf/factbook/2024/Sources.pdf>