

# Paulding County: Children Services Profile

June 2024

## County Demographics 2023

<b>Population</b>		18,800
<b>Race</b>	White	92%
	African American	1%
	Multi-racial	5%
	Other	2%
<b>Ethnicity (% Hispanic)</b>		6%
<b>Child Population</b>		4,474
<b>Per Capita Income</b>		\$35,657
<b>Poverty Rate</b>	All Ages	10%
	Children	12%
<b>Grandparents Raising Grandchildren</b>		190

## Agency Response SFY 2024

<b>Reports Screened-In by Agency</b>		77
<b>By Type</b>	Physical Abuse	29%
	Neglect	26%
	Sexual Abuse	21%
	Emotional Maltreatment	0%
	Multiple Allegations	16%
	Family in Need of Services, Dependency, Other	6%
<b>By Category</b>	Abuse or Neglect (Traditional Response)	27%
	Abuse or Neglect (Alternative Response)	66%
	Dependency	1%
	Family in Need of Services	5%
<b>Cases Transferred to Ongoing</b>		5

## Children in Custody

	SFY 2023	SFY 2024	Change
Total in custody anytime during year	8	13	63%
Rate per 1,000 children	1.8	2.9	63%

## Permanency

Children who gained permanency through	SFY 2023	SFY 2024	Change
Reunification	0	1	-
Guardianship	0	0	-
Custody to Relative	5	5	0%
Adoption	1	1	0%
<b>Children waiting to be adopted</b>	0	0	-

## Youth Aged Out of Care

	SFY 2023	SFY 2024	Change
Number Aged Out	0	0	-

## Children Served

	On 7/1/2023		On 7/1/2024	
Total	15		18	
In Custody	2	13%	7	39%
In Home	13	87%	11	61%

## Profile of Children in Custody on 7/1/2024

### Gender

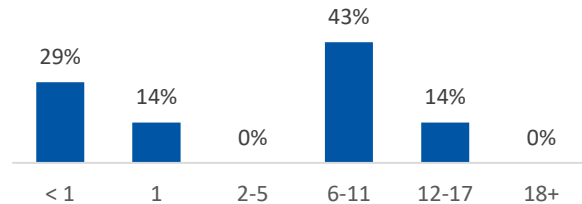
Female	71%
Male	29%

### Race

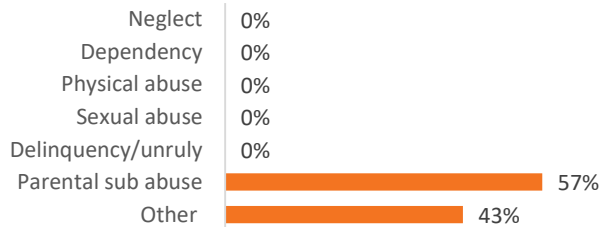
White	100%
African American	0%
Multiracial	0%
Other	0%

**Ethnicity (% Hispanic)** 57%

### Age in Years



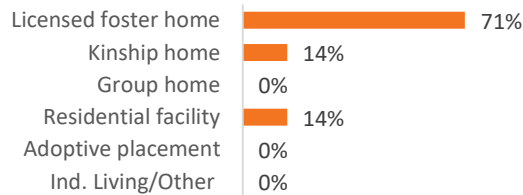
### Primary Reason for Removal



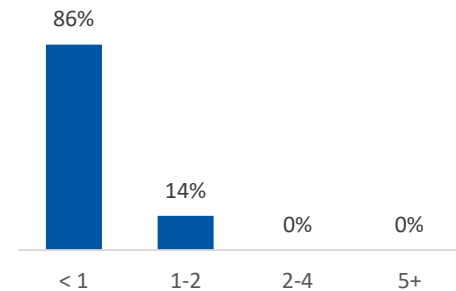
### Type of Custody

Temporary	100%
Permanent	0%
Planned Permanent	0%
Living Arrangement	0%

### Placement Type



### Years in Custody



## Profile of Children in Home on 7/1/2024

### Gender

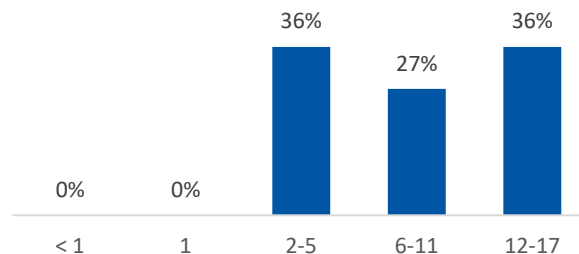
Female	82%
Male	18%

### Race

White	73%
African American	27%
Multiracial	0%
Other	0%

**Ethnicity (% Hispanic)** 0%

### Age in Years



### Contact Information

Defiance/Paulding Consolidated Job & Family Services, 6879 Evansport Rd, Suite A, Defiance, Ohio 43512, (419) 782-3881

For data sources and notes, go to <https://www.pcsao.org/pdf/factbook/2024/Sources.pdf>