

# Mercer County: Children Services Profile

June 2024

## County Demographics 2023

<b>Population</b>		42,438
<b>Race</b>	White	95%
	African American	1%
	Multi-racial	3%
	Other	2%
<b>Ethnicity (% Hispanic)</b>		2%
<b>Child Population</b>		11,076
<b>Per Capita Income</b>		\$35,087
<b>Poverty Rate</b>	All Ages	6%
	Children	6%
<b>Grandparents Raising Grandchildren</b>		135

## Agency Response SFY 2024

<b>Reports Screened-In by Agency</b>		150
<b>By Type</b>	Physical Abuse	29%
	Neglect	15%
	Sexual Abuse	23%
	Emotional Maltreatment	1%
	Multiple Allegations	6%
	Family in Need of Services, Dependency, Other	22%
<b>By Category</b>	Abuse or Neglect (Traditional Response)	29%
	Abuse or Neglect (Alternative Response)	49%
	Dependency	7%
	Family in Need of Services	15%
<b>Cases Transferred to Ongoing</b>		19

## Children in Custody

	SFY 2023	SFY 2024	Change
Total in custody anytime during year	55	37	-33%
Rate per 1,000 children	5.0	3.3	-33%

## Permanency

Children who gained permanency through	SFY 2023	SFY 2024	Change
Reunification	12	8	-33%
Guardianship	3	0	-100%
Custody to Relative	7	6	-14%
Adoption	4	3	-25%
<b>Children waiting to be adopted</b>	4	4	0%

## Youth Aged Out of Care

	SFY 2023	SFY 2024	Change
Number Aged Out	4	3	-25%

## Children Served

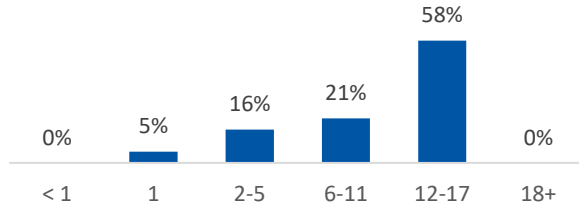
	On 7/1/2023		On 7/1/2024	
Total	71		50	
In Custody	24	34%	19	38%
In Home	47	66%	31	62%

## Profile of Children in Custody on 7/1/2024

### Gender

Female	47%
Male	53%

### Age in Years



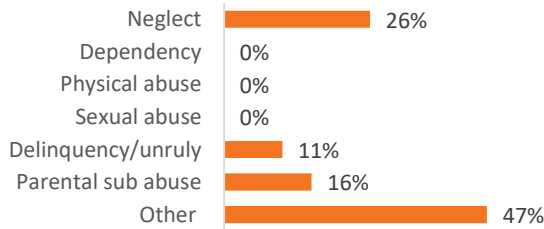
### Race

White	95%
African American	0%
Multiracial	5%
Other	0%

### Ethnicity (% Hispanic)

5%

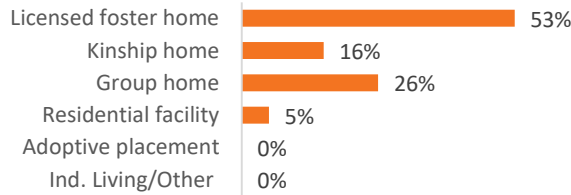
### Primary Reason for Removal



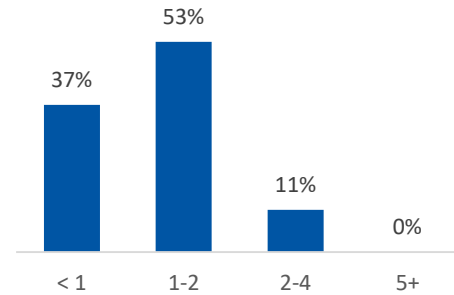
### Type of Custody

Temporary	89%
Permanent	0%
Planned Permanent Living Arrangement	11%

### Placement Type



### Years in Custody

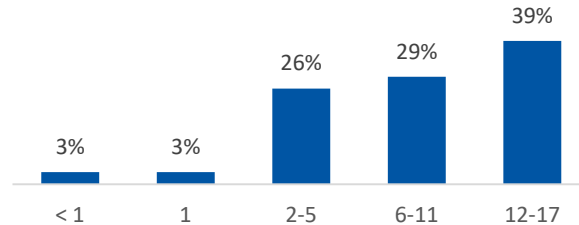


## Profile of Children in Home on 7/1/2024

### Gender

Female	58%
Male	42%

### Age in Years



### Race

White	87%
African American	0%
Multiracial	13%
Other	0%

### Ethnicity (% Hispanic)

3%



### Contact Information

Mercer County Job & Family Services, 220 W Livingston St,  
Celina, Ohio 45822, (419) 586-5106

For data sources and notes, go to  
<https://www.pcsao.org/pdf/factbook/2024/Sources.pdf>