

# Marion County: Children Services Profile

June 2024

## County Demographics 2023

<b>Population</b>		65,145
<b>Race</b>	White	88%
	African American	5%
	Multi-racial	5%
	Other	2%
<b>Ethnicity (% Hispanic)</b>		3%
<b>Child Population</b>		13,876
<b>Per Capita Income</b>		\$30,491
<b>Poverty Rate</b>	All Ages	15%
	Children	18%
<b>Grandparents Raising Grandchildren</b>		498

## Agency Response SFY 2024

<b>Reports Screened-In by Agency</b>		802
<b>By Type</b>	Physical Abuse	17%
	Neglect	39%
	Sexual Abuse	8%
	Emotional Maltreatment	0%
	Multiple Allegations	27%
	Family in Need of Services, Dependency, Other	8%
<b>By Category</b>	Abuse or Neglect (Traditional Response)	92%
	Abuse or Neglect (Alternative Response)	0%
	Dependency	3%
	Family in Need of Services	5%
<b>Cases Transferred to Ongoing</b>		96

## Children in Custody

	SFY 2023	SFY 2024	Change
Total in custody anytime during year	97	104	7%
Rate per 1,000 children	7.0	7.5	7%

## Permanency

Children who gained permanency through	SFY 2023	SFY 2024	Change
Reunification	15	20	33%
Guardianship	10	2	-80%
Custody to Relative	7	20	186%
Adoption	7	6	-14%
<b>Children waiting to be adopted</b>	13	16	23%

## Youth Aged Out of Care

	SFY 2023	SFY 2024	Change
Number Aged Out	4	3	-25%

## Children Served

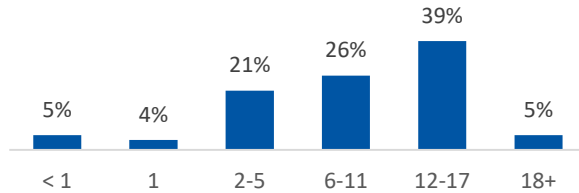
	On 7/1/2023		On 7/1/2024	
Total	201		138	
In Custody	56	28%	57	41%
In Home	145	72%	81	59%

## Profile of Children in Custody on 7/1/2024

### Gender

Female	49%
Male	51%

### Age in Years



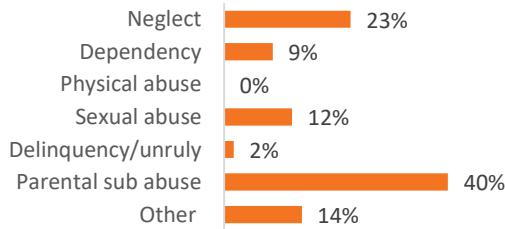
### Race

White	77%
African American	4%
Multiracial	19%
Other	0%

### Ethnicity (% Hispanic)

5%

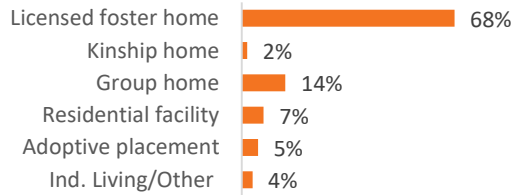
### Primary Reason for Removal



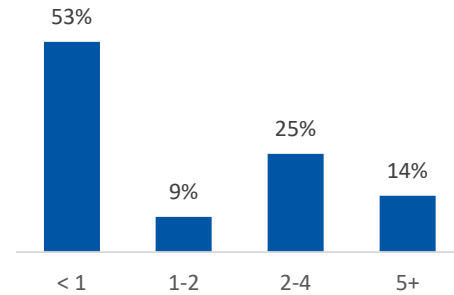
### Type of Custody

Temporary	63%
Permanent	35%
Planned Permanent Living Arrangement	2%

### Placement Type



### Years in Custody

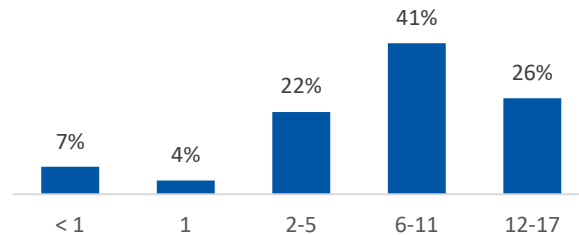


## Profile of Children in Home on 7/1/2024

### Gender

Female	47%
Male	53%

### Age in Years



### Race

White	77%
African American	2%
Multiracial	21%
Other	0%

### Ethnicity (% Hispanic)

2%



Contact Information Marion County Children Services, 1680 Marion Waldo Rd, Marion, Ohio 43302, (740) 389-2317

For data sources and notes, go to <https://www.pcsao.org/pdf/factbook/2024/Sources.pdf>