

# Licking County: Children Services Profile

June 2024

## County Demographics 2023

<b>Population</b>		180,311
<b>Race</b>	White	87%
	African American	4%
	Multi-racial	5%
	Other	4%
<b>Ethnicity (% Hispanic)</b>		2%
<b>Child Population</b>		41,472
<b>Per Capita Income</b>		\$41,543
<b>Poverty Rate</b>	All Ages	10%
	Children	13%
<b>Grandparents Raising Grandchildren</b>		1,460

## Agency Response SFY 2024

<b>Reports Screened-In by Agency</b>		943
<b>By Type</b>	Physical Abuse	30%
	Neglect	35%
	Sexual Abuse	13%
	Emotional Maltreatment	1%
	Multiple Allegations	10%
	Family in Need of Services, Dependency, Other	8%
<b>By Category</b>	Abuse or Neglect (Traditional Response)	35%
	Abuse or Neglect (Alternative Response)	57%
	Dependency	2%
	Family in Need of Services	6%
<b>Cases Transferred to Ongoing</b>		78

## Children in Custody

	SFY 2023	SFY 2024	Change
Total in custody anytime during year	423	395	-7%
Rate per 1,000 children	10.2	9.5	-7%

## Permanency

Children who gained permanency through	SFY 2023	SFY 2024	Change
Reunification	33	42	27%
Guardianship	3	0	-100%
Custody to Relative	28	28	0%
Adoption	74	33	-55%
<b>Children waiting to be adopted</b>	118	64	-46%

## Youth Aged Out of Care

	SFY 2023	SFY 2024	Change
Number Aged Out	17	24	41%

## Children Served

	On 7/1/2023		On 7/1/2024	
Total	370		379	
In Custody	268	72%	268	71%
In Home	102	28%	111	29%

## Profile of Children in Custody on 7/1/2024

### Gender

Female	48%
Male	52%

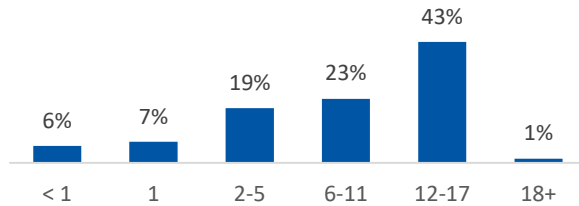
### Race

White	79%
African American	5%
Multiracial	15%
Other	0%

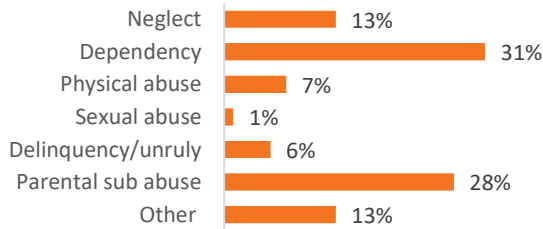
### Ethnicity (% Hispanic)

4%

### Age in Years



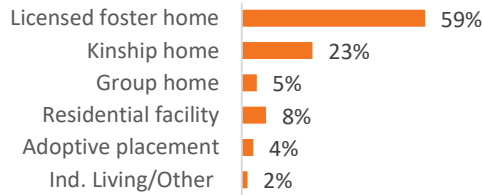
### Primary Reason for Removal



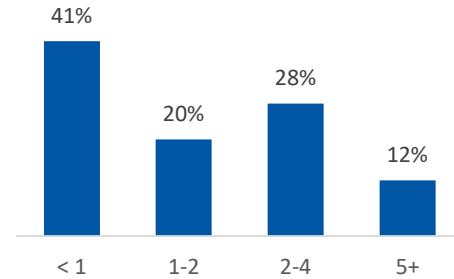
### Type of Custody

Temporary	70%
Permanent	24%
Planned Permanent Living Arrangement	6%

### Placement Type



### Years in Custody



## Profile of Children in Home on 7/1/2024

### Gender

Female	42%
Male	58%

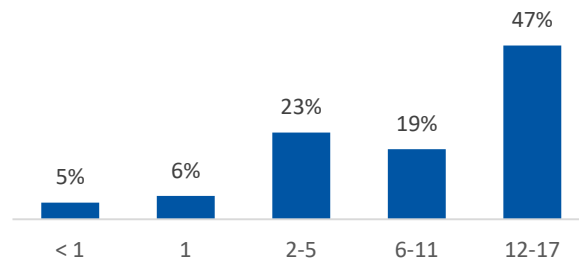
### Race

White	78%
African American	5%
Multiracial	16%
Other	0%

### Ethnicity (% Hispanic)

3%

### Age in Years



Contact Information

Licking County Job & Family Services, 74 S Second St, Newark, Ohio 43058, (740) 670-8999

For data sources and notes, go to <https://www.pcsao.org/pdf/factbook/2024/Sources.pdf>