

# Knox County: Children Services Profile

June 2024

## County Demographics 2023

<b>Population</b>		62,888
Race	White	94%
	African American	1%
	Multi-racial	3%
	Other	2%
Ethnicity (% Hispanic)		2%
<b>Child Population</b>		14,464
<b>Per Capita Income</b>		\$34,636
<b>Poverty Rate</b>	All Ages	11%
	Children	14%
<b>Grandparents Raising Grandchildren</b>		228

## Agency Response SFY 2024

<b>Reports Screened-In by Agency</b>		560
<b>By Type</b>	Physical Abuse	19%
	Neglect	34%
	Sexual Abuse	6%
	Emotional Maltreatment	1%
	Multiple Allegations	33%
	Family in Need of Services, Dependency, Other	6%
<b>By Category</b>	Abuse or Neglect (Traditional Response)	66%
	Abuse or Neglect (Alternative Response)	28%
	Dependency	2%
	Family in Need of Services	4%
<b>Cases Transferred to Ongoing</b>		68

## Children in Custody

	SFY 2023	SFY 2024	Change
Total in custody anytime during year	139	111	-20%
Rate per 1,000 children	9.6	7.7	-20%

## Permanency

Children who gained permanency through	SFY 2023	SFY 2024	Change
Reunification	36	21	-42%
Guardianship	0	0	-
Custody to Relative	13	3	-77%
Adoption	18	10	-44%
<b>Children waiting to be adopted</b>	26	15	-42%

## Youth Aged Out of Care

	SFY 2023	SFY 2024	Change
Number Aged Out	14	8	-43%

## Children Served

	On 7/1/2023		On 7/1/2024	
Total	184		212	
In Custody	60	33%	69	33%
In Home	124	67%	143	67%

## Profile of Children in Custody on 7/1/2024

### Gender

Female	39%
Male	61%

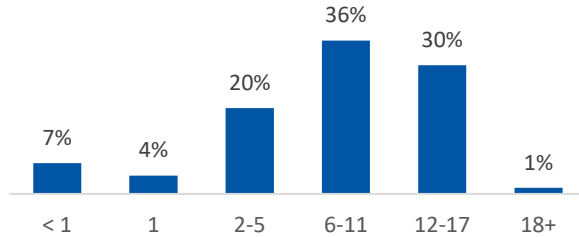
### Race

White	86%
African American	1%
Multiracial	13%
Other	0%

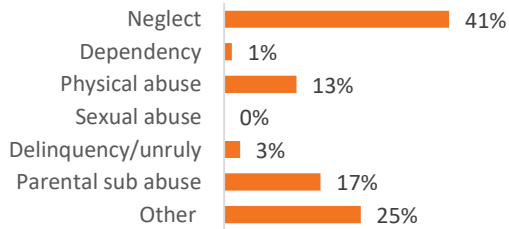
### Ethnicity (% Hispanic)

4%

### Age in Years



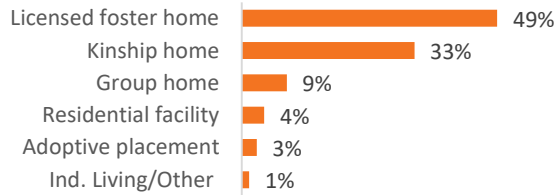
### Primary Reason for Removal



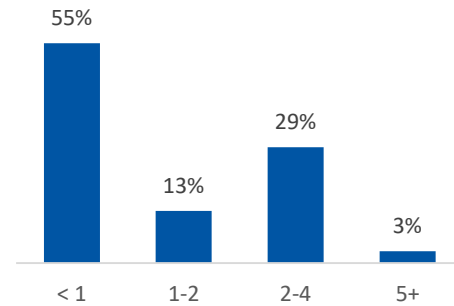
### Type of Custody

Temporary	68%
Permanent	29%
Planned Permanent Living Arrangement	0%

### Placement Type



### Years in Custody



## Profile of Children in Home on 7/1/2024

### Gender

Female	52%
Male	48%

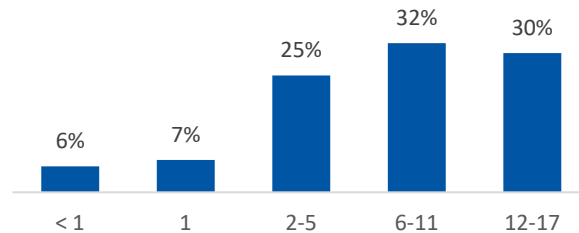
### Race

White	95%
African American	1%
Multiracial	4%
Other	0%

### Ethnicity (% Hispanic)

8%

### Age in Years



Contact Information

Knox County Job & Family Services, 117 E High St, 4th Floor,  
Mount Vernon, Ohio 43050, (740) 397-7177

For data sources and notes, go to  
<https://www.pcsao.org/pdf/factbook/2024/Sources.pdf>