

# Seneca County: Children Services Profile

June 2023

## County Demographics 2022

<b>Population</b>		55,062
Race	White	92%
	African American	3%
	Multi-racial	3%
	Other	2%
Ethnicity (% Hispanic)		6%
<b>Child Population</b>		11,893
<b>Per Capita Income</b>		\$31,770
<b>Poverty Rate</b>	All Ages	12%
	Children	16%
<b>Grandparents Raising Grandchildren</b>		906

## Agency Response SFY 2023

<b>Reports Screened-In by Agency</b>		437
<b>By Type</b>	Physical Abuse	45%
	Neglect	19%
	Sexual Abuse	9%
	Emotional Maltreatment	0%
	Multiple Allegations	13%
	Family in Need of Services, Dependency, Other	12%
<b>By Category</b>	Abuse or Neglect (Traditional Response)	33%
	Abuse or Neglect (Alternative Response)	55%
	Dependency	4%
	Family in Need of Services	8%
<b>Cases Transferred to Ongoing</b>		63

<b>Children in Custody</b>	<b>SFY 2022</b>	<b>SFY 2023</b>	<b>Change</b>
Total in custody anytime during year	41	54	32%
Rate per 1,000 children	3.5	4.5	32%

## Permanency

<b>Children who gained permanency through</b>	<b>SFY 2022</b>	<b>SFY 2023</b>	<b>Change</b>
Reunification	5	4	-20%
Guardianship	0	0	-
Custody to Relative	2	1	-50%
Adoption	7	2	-71%
<b>Children waiting to be adopted</b>	8	3	-63%

## Youth Aged Out of Care

	<b>SFY 2022</b>	<b>SFY 2023</b>	<b>Change</b>
Number Aged Out	1	4	300%

## Children Served

	On 7/1/2022		On 7/1/2023	
Total	110		107	
In Custody	25	23%	35	33%
In Home	85	77%	72	67%

## Profile of Children in Custody on 7/1/2023

### Gender

Female	54%
Male	46%

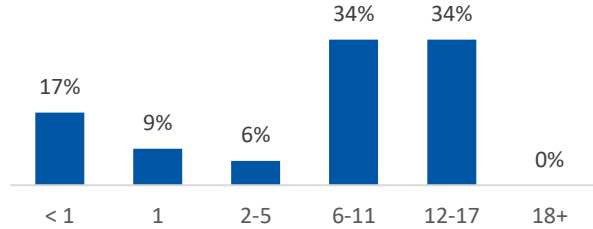
### Race

White	80%
African American	3%
Multiracial	17%
Other	0%

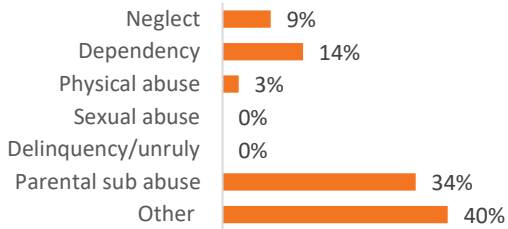
### Ethnicity (% Hispanic)

9%

### Age in Years



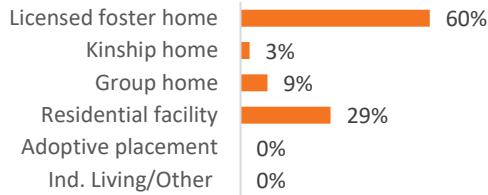
### Primary Reason for Removal



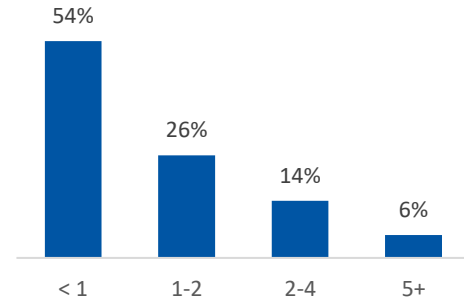
### Type of Custody

Temporary	77%
Permanent	20%
Planned Permanent Living Arrangement	3%

### Placement Type



### Years in Custody



## Profile of Children in Home on 7/1/2023

### Gender

Female	57%
Male	43%

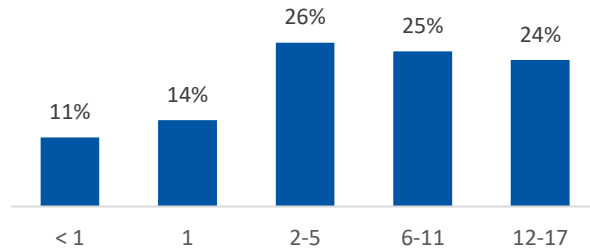
### Race

White	82%
African American	4%
Multiracial	14%
Other	0%

### Ethnicity (% Hispanic)

6%

### Age in Years



Contact Information Seneca County Job & Family Services, 900 East County Road 20, Tiffin, OH 44883, (419) 447-5011

For data sources and notes, go to <https://www.pcsao.org/pdf/factbook/2023/Sources.pdf>