

# Highland County: Children Services Profile

June 2023

## County Demographics 2022

<b>Population</b>	43,285	
Race	White	95%
	African American	2%
	Multi-racial	3%
	Other	1%
Ethnicity (% Hispanic)	1%	
<b>Child Population</b>	10,302	
<b>Per Capita Income</b>	\$27,971	
Poverty Rate	All Ages	15%
	Children	18%
<b>Grandparents Raising Grandchildren</b>	496	

## Agency Response SFY 2023

<b>Reports Screened-In by Agency</b>	446	
By Type	Physical Abuse	18%
	Neglect	19%
	Sexual Abuse	8%
	Emotional Maltreatment	3%
	Multiple Allegations	21%
	Family in Need of Services, Dependency, Other	28%
By Category	Abuse or Neglect (Traditional Response)	40%
	Abuse or Neglect (Alternative Response)	32%
	Dependency	5%
	Family in Need of Services	23%
<b>Cases Transferred to Ongoing</b>	75	

Children in Custody	SFY 2022	SFY 2023	Change
Total in custody anytime during year	285	285	0%
Rate per 1,000 children	27.7	27.7	0%

## Permanency

Children who gained permanency through	SFY 2022	SFY 2023	Change
Reunification	76	67	-12%
Guardianship	10	3	-70%
Custody to Relative	22	28	27%
Adoption	3	13	333%
<b>Children waiting to be adopted</b>	20	33	65%

## Youth Aged Out of Care

	SFY 2022	SFY 2023	Change
Number Aged Out	10	8	-20%

## Children Served

	On 7/1/2022		On 7/1/2023	
Total	244		248	
In Custody	165	68%	159	64%
In Home	79	32%	89	36%

## Profile of Children in Custody on 7/1/2023

### Gender

Female	45%
Male	55%

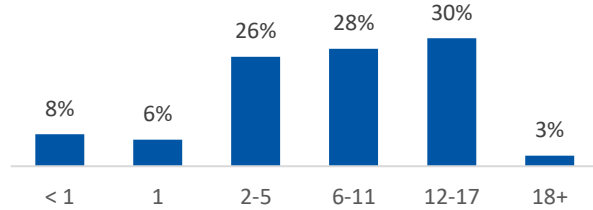
### Race

White	92%
African American	1%
Multiracial	6%
Other	0%

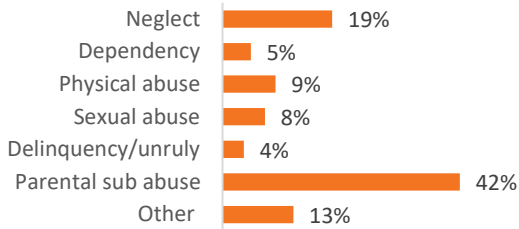
### Ethnicity (% Hispanic)

1%

### Age in Years



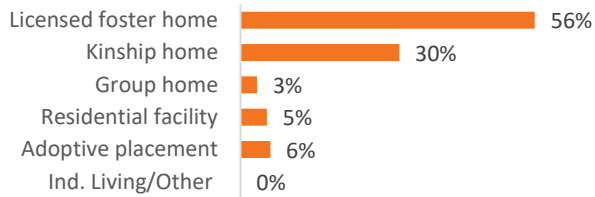
### Primary Reason for Removal



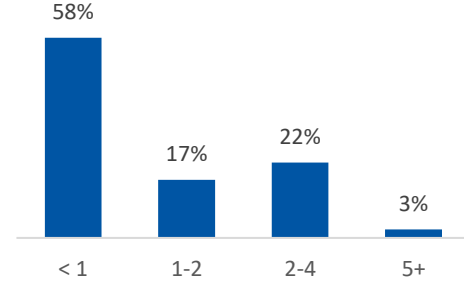
### Type of Custody

Temporary	77%
Permanent	21%
Planned Permanent Living Arrangement	2%

### Placement Type



### Years in Custody



## Profile of Children in Home on 7/1/2023

### Gender

Female	52%
Male	47%

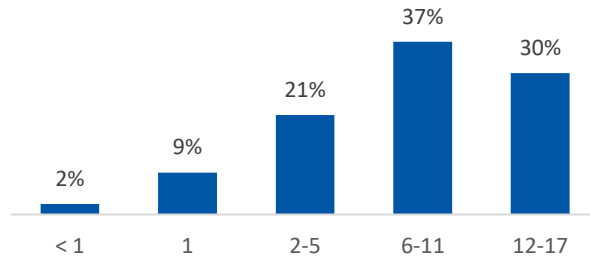
### Race

White	89%
African American	2%
Multiracial	1%
Other	0%

### Ethnicity (% Hispanic)

0%

### Age in Years



### Contact Information

Highland County Job & Family Services, 1575 North High Street, Suite 100, Hillsboro, OH 45133, (937) 393-4278

For data sources and notes, go to <https://www.pcsao.org/pdf/factbook/2023/Sources.pdf>