

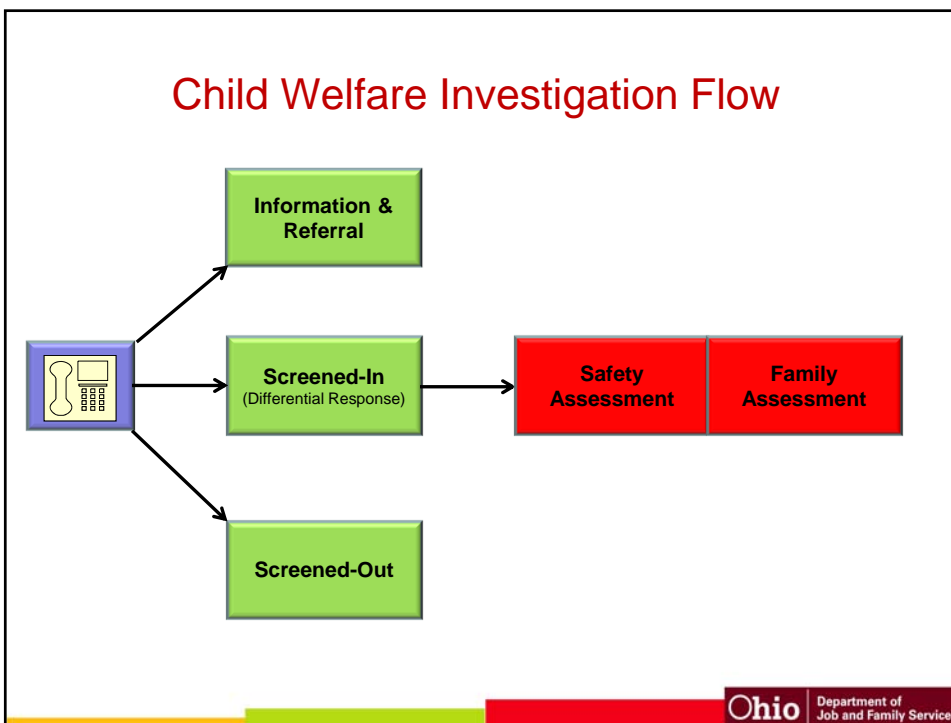
Ohio MEANS Jobs .com
Department of Job and Family Services
John R. Kasich, Governor
Cynthia Callender Dungey, Director

Office of Families and Children

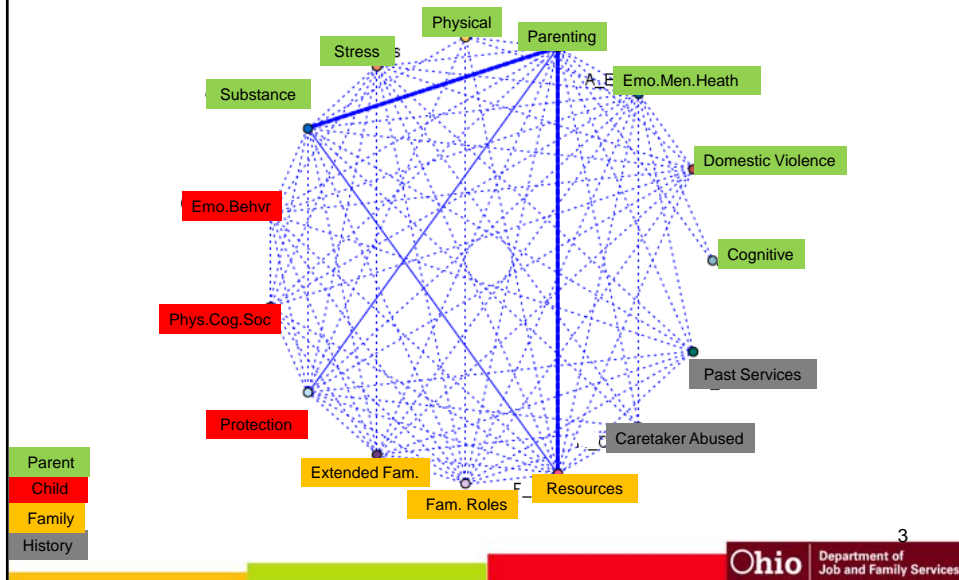
Heroin, Cocaine and Child Protection

Ohio's 2014 Opiate Conference
County Behavioral Health Authorities
July 1, 2014

Roger Ward
Data Project Manager
Court Improvement Program
Roger.Ward@jfs.ohio.gov

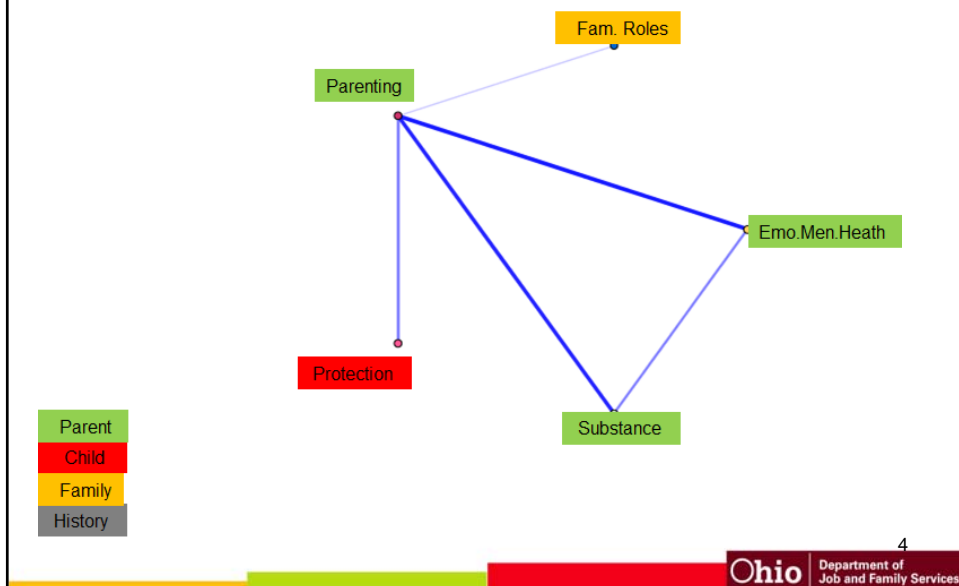


Parenting, Substance Abuse, & Resources

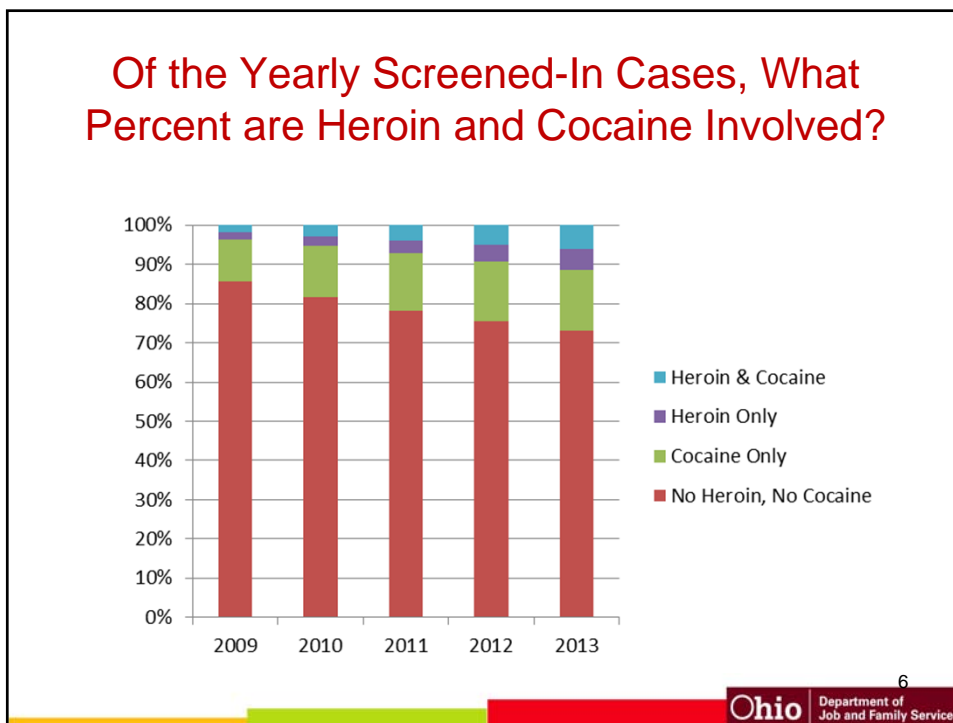
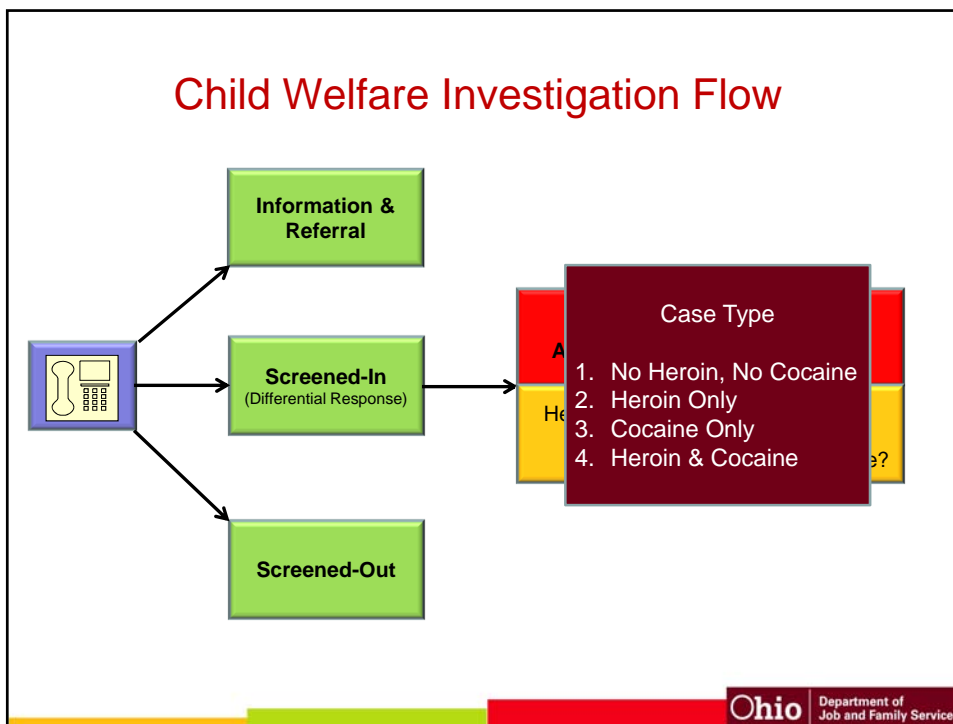


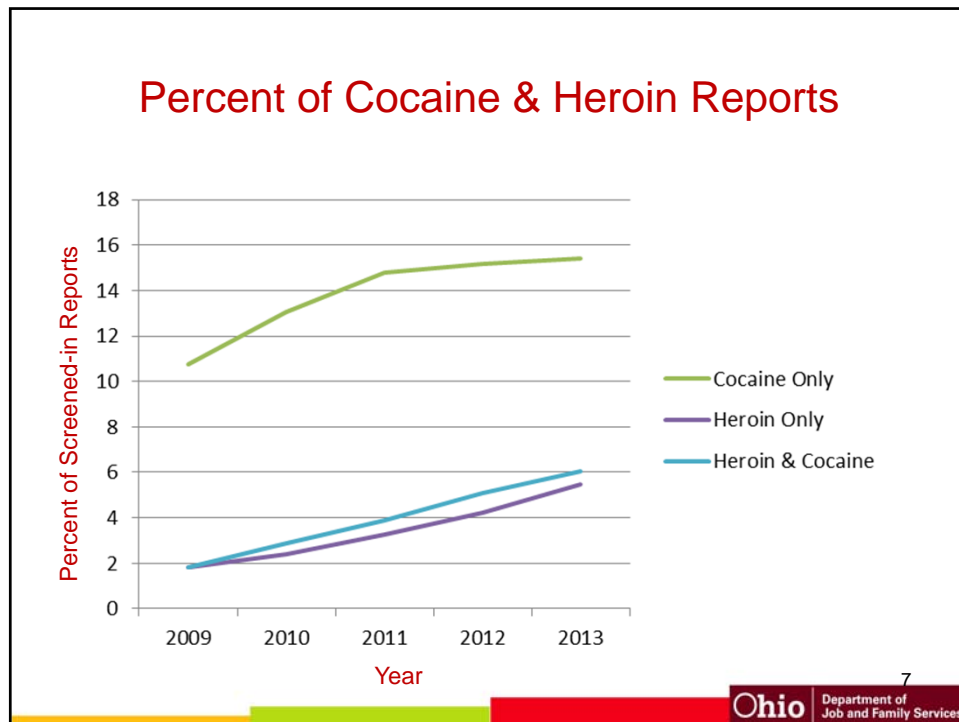
3

If Domestic Violence is in the Case..



4



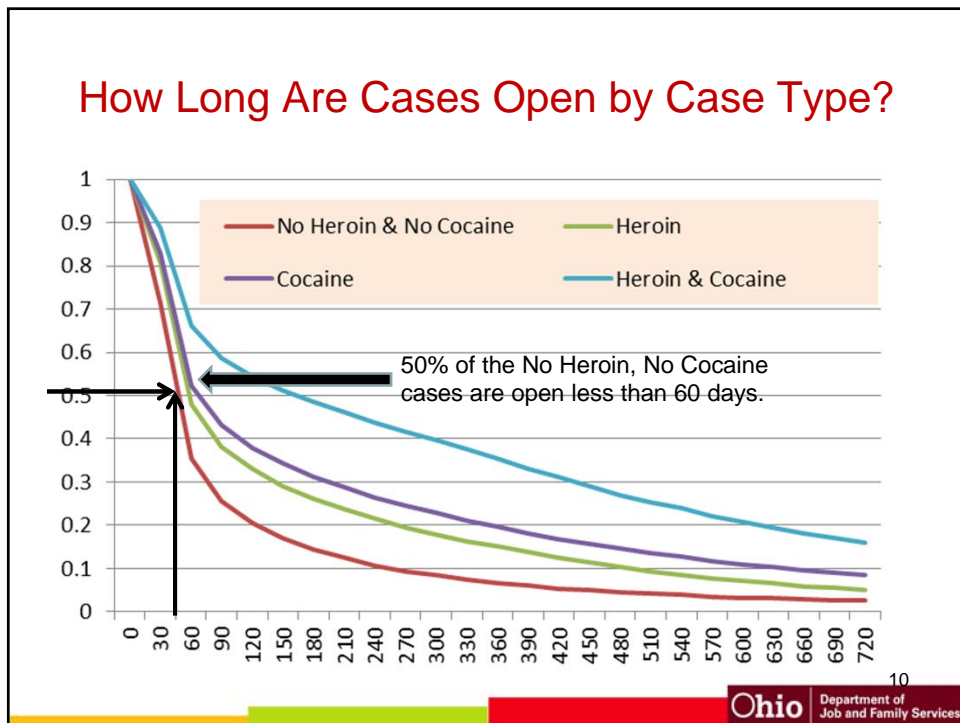
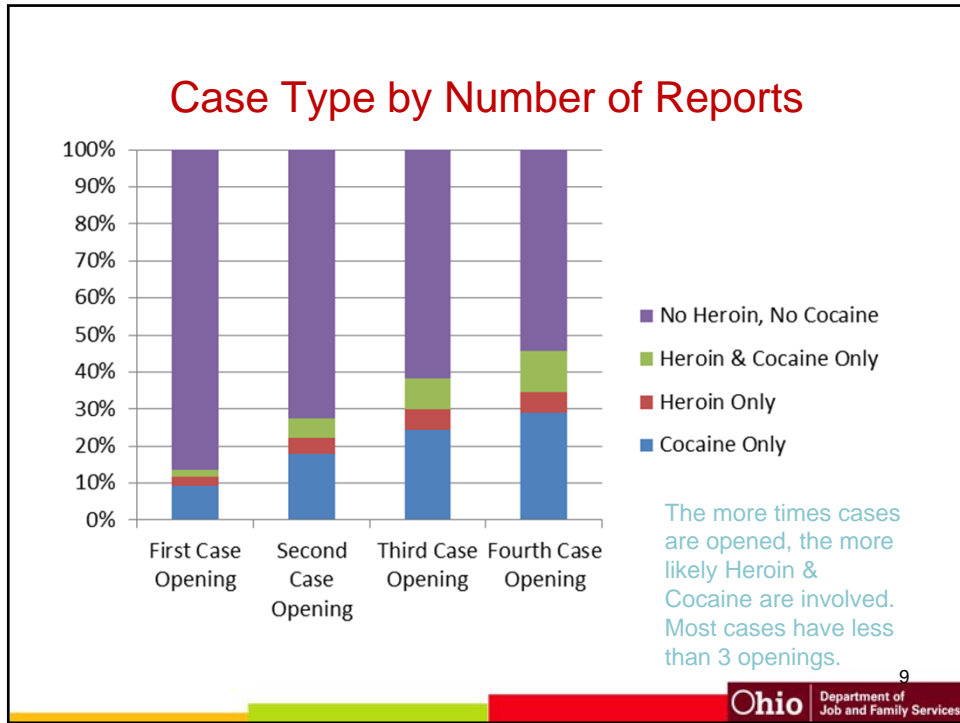


What Have We Learned So Far?

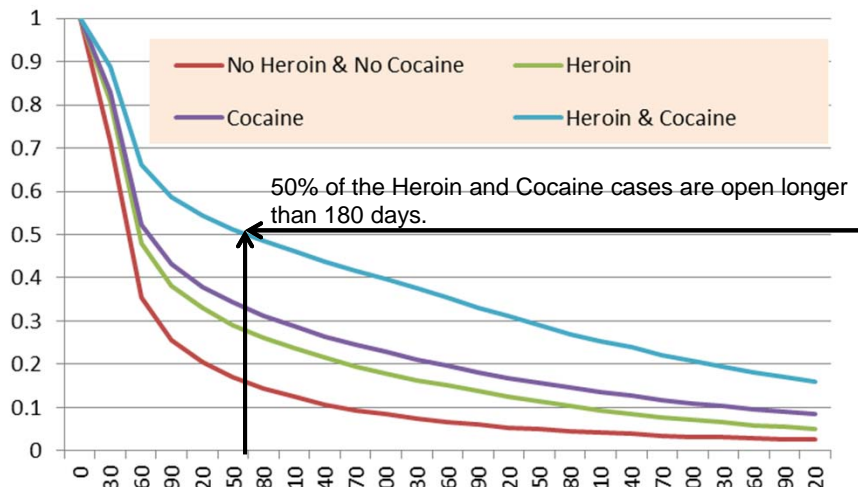
- About 86,000 Screened-In cases per year
- Variety of assessments are done
- Text-mined Case Notes: Heroin and Cocaine

Since 2009

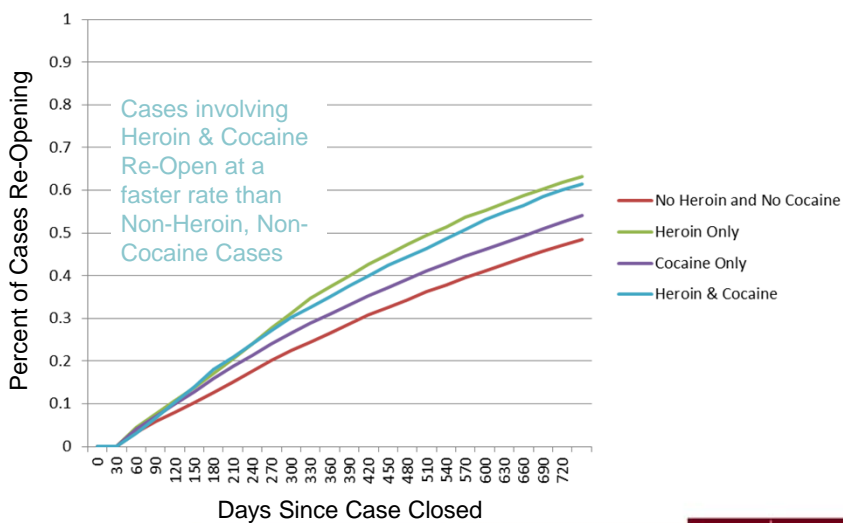
- Decreasing proportion of non-Heroin and non-Cocaine cases
- Increasing proportion of Heroin and Cocaine cases.



How Long Are Cases Open by Case Type?



What's the Likelihood of a Case Re-Opening?

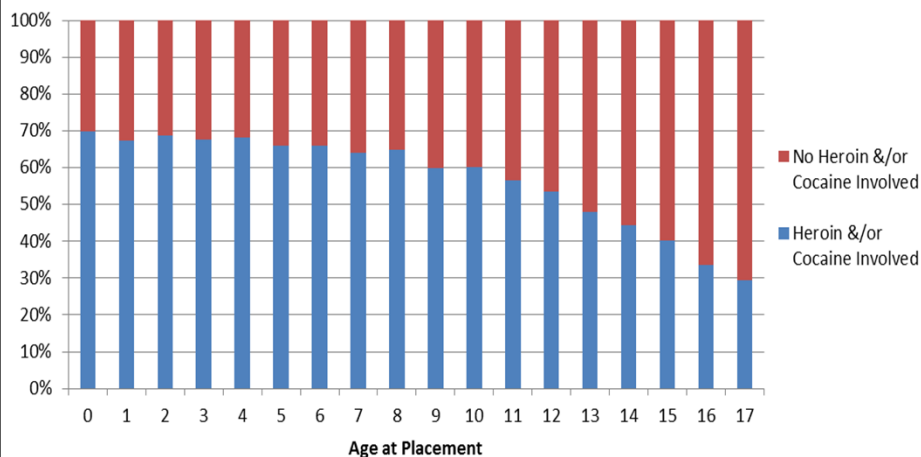


What Have We Learned?

- The more “well known” the cases are, the more likely cocaine and heroin, alone and in combination, will be found.
- Half of the non-heroin, non-cocaine cases are closed in 60 days.
- Half of the heroin and cocaine cases close within 150 days.
 - 18% are open longer than 2 years.
- Heroin and Cocaine cases re-open faster than non-Heroin and non-Cocaine cases

13

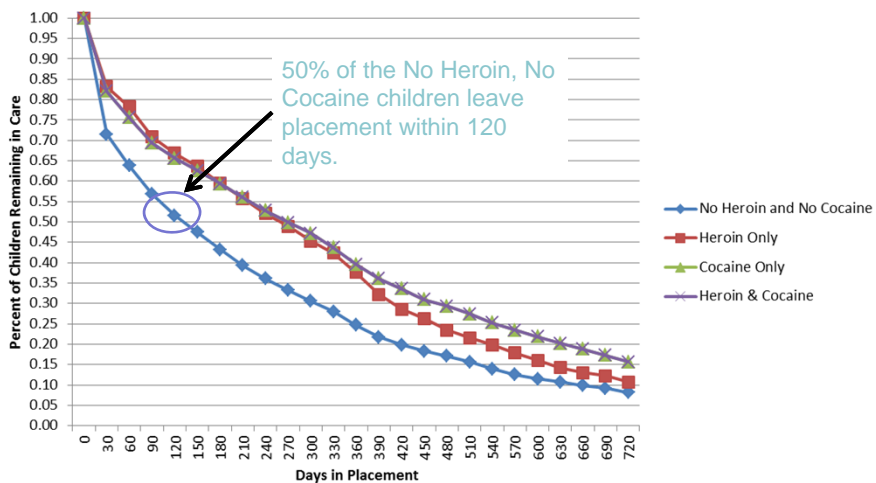
How Old are the Children at Placement?



Of the children under 1 year of age who are placed, 70% have parents using Heroin &/or Cocaine.

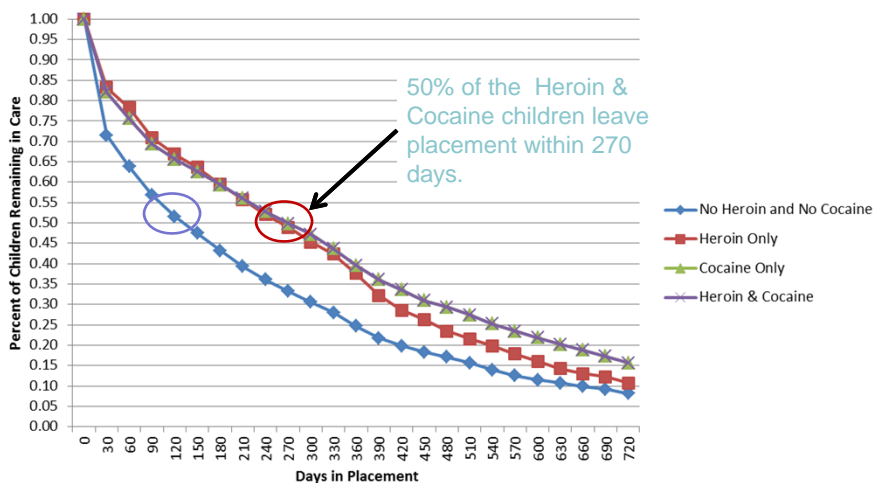
14

By Case Type, How Long Do Children Spend in Placement?



15

By Case Type, How Long Do Children Spend in Placement?



16

Thank you for listening.



**Department of
Job and Family Services**

John R. Kasich, Governor
Cynthia Callender Dungey, Director

**Office of
Families and Children**