

# Delaware County: Children Services Profile

June 2023

## County Demographics 2022

<b>Population</b>	216,074	
Race	White	83%
	African American	4%
	Multi-racial	5%
	Other	8%
Ethnicity (% Hispanic)	3%	
<b>Child Population</b>	54,883	
<b>Per Capita Income</b>	\$56,963	
<b>Poverty Rate</b>	All Ages	5%
	Children	5%
<b>Grandparents Raising Grandchildren</b>	512	

## Agency Response SFY 2023

<b>Reports Screened-In by Agency</b>	431	
<b>By Type</b>	Physical Abuse	33%
	Neglect	19%
	Sexual Abuse	10%
	Emotional Maltreatment	2%
	Multiple Allegations	20%
	Family in Need of Services, Dependency, Other	13%
<b>By Category</b>	Abuse or Neglect (Traditional Response)	30%
	Abuse or Neglect (Alternative Response)	57%
	Dependency	5%
	Family in Need of Services	8%
<b>Cases Transferred to Ongoing</b>	22	

<b>Children in Custody</b>	<b>SFY 2022</b>	<b>SFY 2023</b>	<b>Change</b>
Total in custody anytime during year	64	53	-17%
Rate per 1,000 children	1.2	1.0	-17%

## Permanency

<b>Children who gained permanency through</b>	<b>SFY 2022</b>	<b>SFY 2023</b>	<b>Change</b>
Reunification	9	7	-22%
Guardianship	2	0	-100%
Custody to Relative	1	2	100%
Adoption	7	5	-29%
<b>Children waiting to be adopted</b>	4	5	25%

## Youth Aged Out of Care

	<b>SFY 2022</b>	<b>SFY 2023</b>	<b>Change</b>
Number Aged Out	2	2	0%

## Children Served

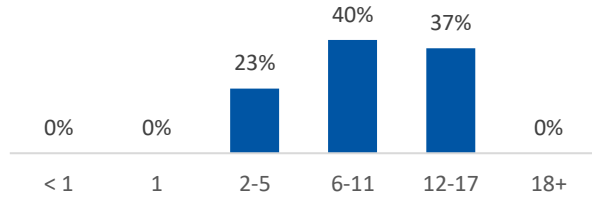
	On 7/1/2022		On 7/1/2023	
Total	93		57	
In Custody	41	44%	35	61%
In Home	52	56%	22	39%

## Profile of Children in Custody on 7/1/2023

### Gender

Female	57%
Male	43%

### Age in Years



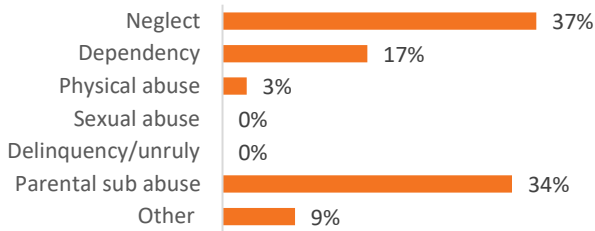
### Race

White	86%
African American	0%
Multiracial	14%
Other	0%

### Ethnicity (% Hispanic)

23%

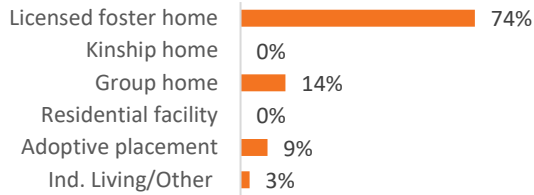
### Primary Reason for Removal



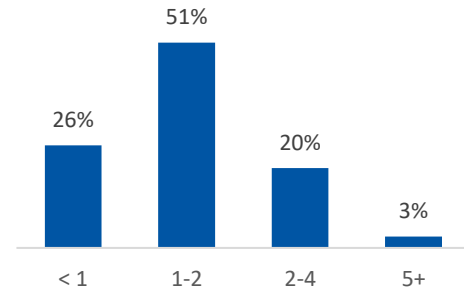
### Type of Custody

Temporary	71%
Permanent	20%
Planned Permanent Living Arrangement	9%

### Placement Type



### Years in Custody

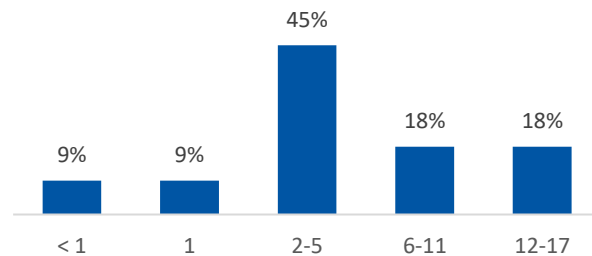


## Profile of Children in Home on 7/1/2023

### Gender

Female	50%
Male	50%

### Age in Years



### Race

White	64%
African American	23%
Multiracial	14%
Other	0%

### Ethnicity (% Hispanic)

0%



### Contact Information

Delaware County Job & Family Services, 145 N. Union St.,  
Delaware, OH 43015, (740) 833-2300

For data sources and notes, go to  
<https://www.pcsao.org/pdf/factbook/2023/Sources.pdf>