

# Montgomery County: Children Services Profile

June 2020

## County Demographics 2019

<b>Population</b>	531,670	
Race	White	73%
	African American	20%
	Multi-racial	4%
	Other	3%
Ethnicity (% Hispanic)	3%	
<b>Child Population</b>	117,499	
<b>Per Capita Income</b>	\$30,034	
Poverty Rate	All Ages	17%
	Children	25%
<b>Grandparents Raising Grandchildren</b>	4,482	

## Agency Response SFY 2020

<b>Reports Screened-In by Agency</b>	4,378	
By Type	Physical Abuse	31%
	Neglect	26%
	Sexual Abuse	7%
	Emotional Maltreatment	0%
	Multiple Allegations	21%
	Families in Need of Assistance, Dependency, Other	13%
By Category	Abuse or Neglect (Traditional Response)	36%
	Abuse or Neglect (Alternative Response)	50%
	Dependency	6%
	Families in Need of Assistance	7%
<b>Cases Transferred to Ongoing</b>	873	

Children in Custody	SFY 2018	SFY 2020	Change
Total in custody anytime during year	1,019	1,019	0%
Rate per 1,000 children	8.7	8.7	0%

## Permanency

Children who gained permanency through	SFY 2018	SFY 2020	Change
Reunification	115	112	-3%
Guardianship	0	3	-
Custody to Relative	139	61	-56%
Adoption	106	73	-31%
<b>Children waiting to be adopted</b>	196	187	-5%

## Youth Aged Out of Care

	SFY 2018	SFY 2020	Change
Number Aged Out	59	49	-17%

## Children Served

	On 7/1/2018		On 7/1/2020	
Total	1,944		2,157	
In Custody	620	32%	672	31%
In Home	1,324	68%	1,485	69%

## Profile of Children in Custody on 7/1/2020

### Gender

Female	45%
Male	55%

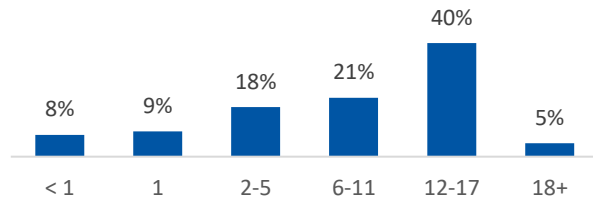
### Race

White	45%
African American	40%
Multiracial	15%
Other	0%

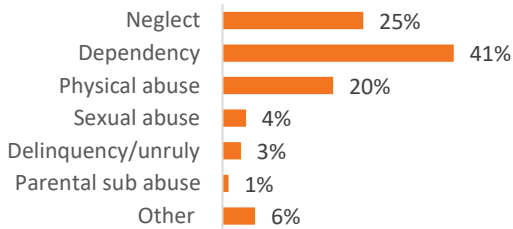
### Ethnicity (% Hispanic)

3%

### Age in Years



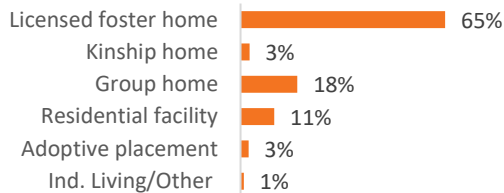
### Primary Reason for Removal



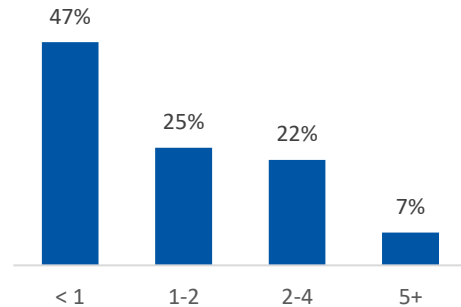
### Type of Custody

Temporary	65%
Permanent	29%
Planned Permanent Living Arrangement	6%

### Placement Type



### Years in Custody



## Profile of Children in Home on 7/1/2020

### Gender

Female	51%
Male	49%

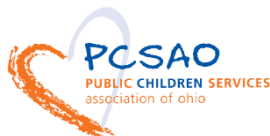
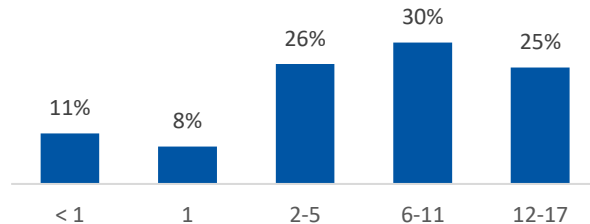
### Race

White	47%
African American	41%
Multiracial	12%
Other	0%

### Ethnicity (% Hispanic)

3%

### Age in Years



### Contact Information

Montgomery County Job & Family Services,  
1111 S. Edwin Moses Blvd., Dayton, OH, 45422, (937) 224-5437

For data sources and notes, go to  
<https://www.pcsao.org/pdf/factbook/2020/Sources.pdf>