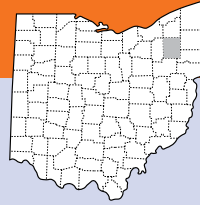


Portage



Population

162,277

- **Race:** White 91% • African American 4%
Multiracial 2% • Other 2%
- **Ethnicity:** Hispanic 2%

Child Population

30,714

Placement Rate

- Number of children in custody per 1,000 **14.9**

Per Capita Income

\$40,730

Poverty Rate

- All ages **15%**
- Children **20%**

Ohio Works First Child Only

- Children receiving child only benefit **660**
- Caregivers receive \$289/month for the first child and an increase for each additional sibling

Grandparents Raising Grandchildren

1,033

FAMILIES AND CHILDREN SERVED

2016 2018



Children placed out of home by the PCSA

306 470

JUVENILE COURT

2016 2018

Court timeliness

Cases pending beyond Supreme Court timeframes 0% 1%

PERMANENCY

2016 2018

Children who gained permanency through

Reunification	89	113
Guardianship	16	7
Custody to relative	62	82
Adoption	6	11

Children waiting to be adopted 13 11

Children supported by Kinship Permanency Incentive Program 67 94

EMANCIPATED YOUTH

2016 2018

Youth aged out of care 6 17

Median # of days in custody before emancipation 253 526

Students received Chaffee ETV post-secondary education grants 2 1

Emancipated youth enrolled in Medicaid 47 51

2018 RESPONSE

1,415 Reports screened in related to child abuse or neglect, dependency, or families in need of services

275 Child abuse/neglect reports screened in for traditional response

991 Child abuse/neglect reports screened in for alternative response

82 Dependency reports screened in

67 Family in need of services reports screened in

Safety assessment Family assessment

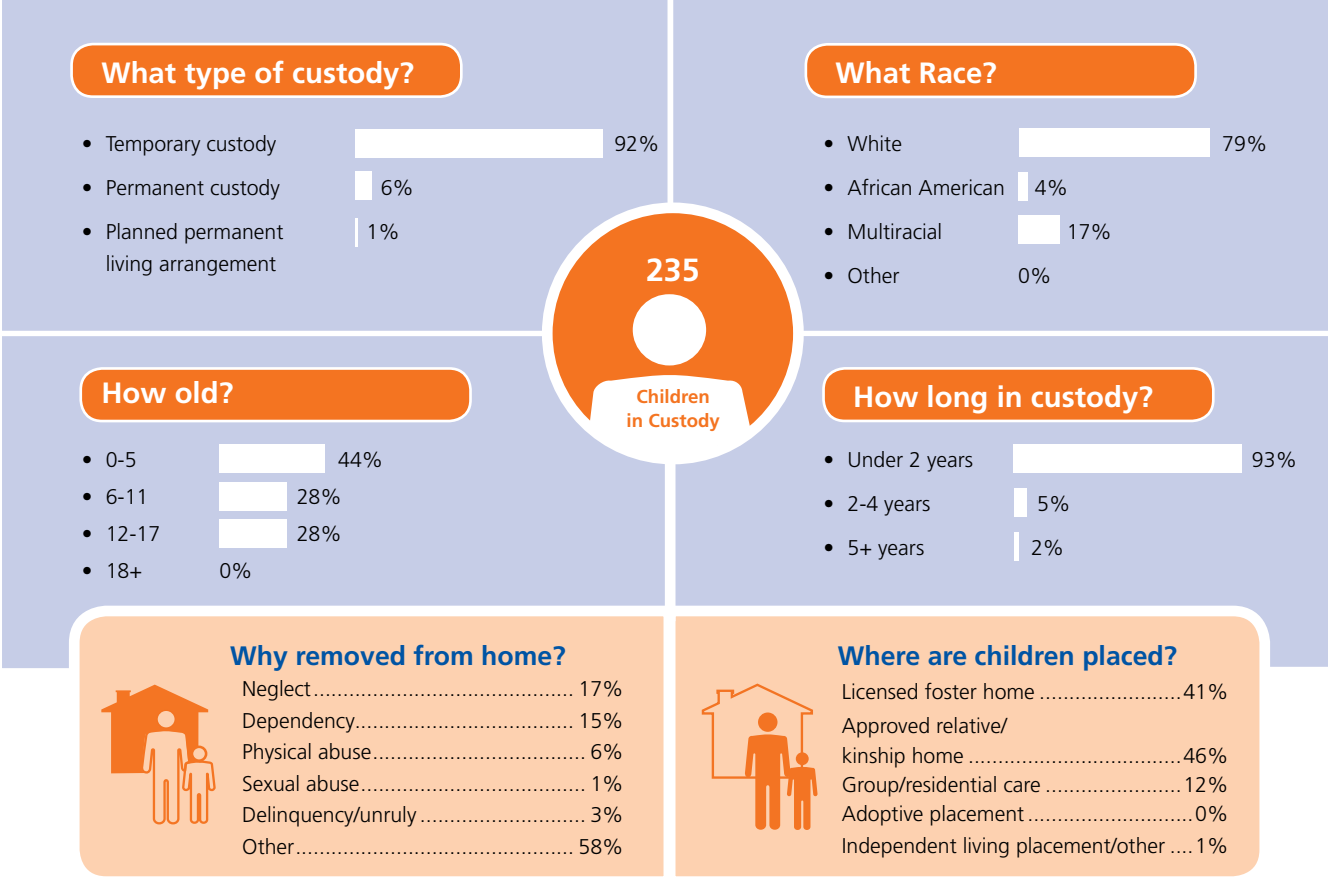
400 Cases transferred to ongoing



TYPES OF REPORTS

Physical abuse	311	22%
Neglect	488	34%
Sexual Abuse	91	6%
Emotional Maltreatment	2	0%
Multiple Allegations of Abuse/Neglect	371	26%
Family in Need of Services/Dependency/Other	152	11%
Total	1,415	100%

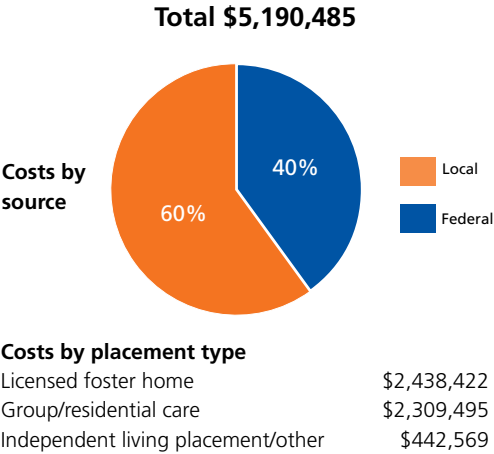
CHILDREN IN PCSA CUSTODY ON 7/1/2018



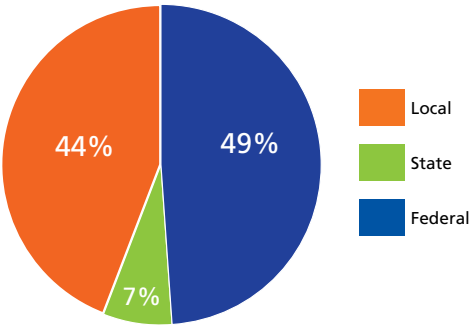
CONTACT INFORMATION

Portage County Department of Job and Family Services
<https://www.co.portage.oh.us/children-services/pages/children-services>
 330-297-3690

PLACEMENT COSTS



2018 PUBLIC CHILDREN SERVICES SPENDING



Total	\$15,129,779
Federal	\$7,457,953
State	\$1,003,834
Local	\$6,667,992

Of Ohio's 88 counties, Portage County did maintain a children services levy in 2018.

ADOPTION ASSISTANCE AND SUBSIDIES

