

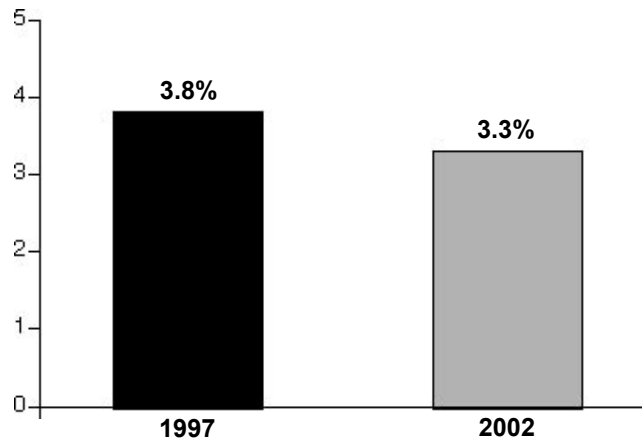
## Percentage of children who experience recidivism within 12 months of case closure

CPOE Indicator & Measure	2C - Safety
CFSR Standard	NA
Time Periods Measured	1997 and 2002

### WHAT DOES THE DATA REVEAL?

The graph reports the percentage of abuse and neglect cases where subsequent abuse/neglect is once again determined within 12 months of termination of the initial cases. Overall, the data suggests that a very small percentage of terminated child abuse/neglect cases result in recidivism (an additional determination of abuse/neglect within 12 months). The percentage of cases involving recidivism slightly decreased from 1997 to 2002. **Reader's Note:** *Recidivism data show children who left the public children services agencies' care during January 1-December 31, 2001, and returned within 12 months, January 1-December 31, 2002. Therefore, the most current data available is based on the children who left care in 2002. There is no CFSR Standard for this CPOE indicator.*

PERCENTAGE OF CHILDREN STATEWIDE



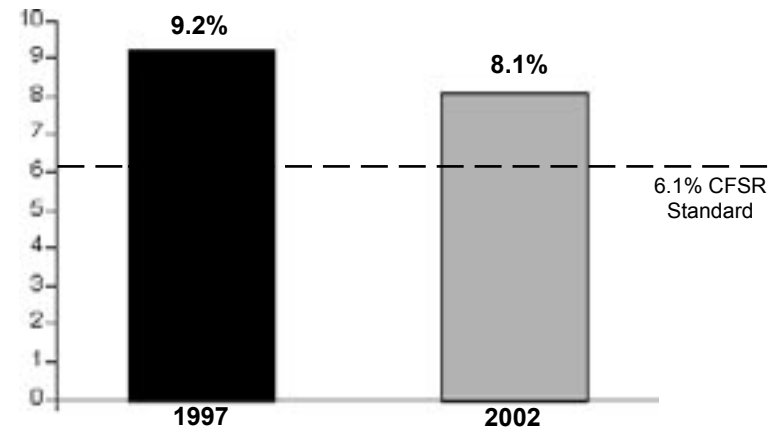
## Percentage of children who experience recurring maltreatment within six months

CPOE Indicator & Measure	2D - Safety
CFSR Standard	6.1% or less
Time Periods Measured	July 1-December 31, 1997 and 2002

### WHAT DOES THE DATA REVEAL?

The graph shows the percentage of children who became victims of substantiated or indicated abuse and neglect that is followed by recurrences of maltreatment within six months. The CFSR Standard is 6.1% or less children experiencing repeat maltreatment within six months. From 1997 to 2002, the percentage of children experiencing recurring maltreatment has reduced.

PERCENTAGE OF CHILDREN STATEWIDE

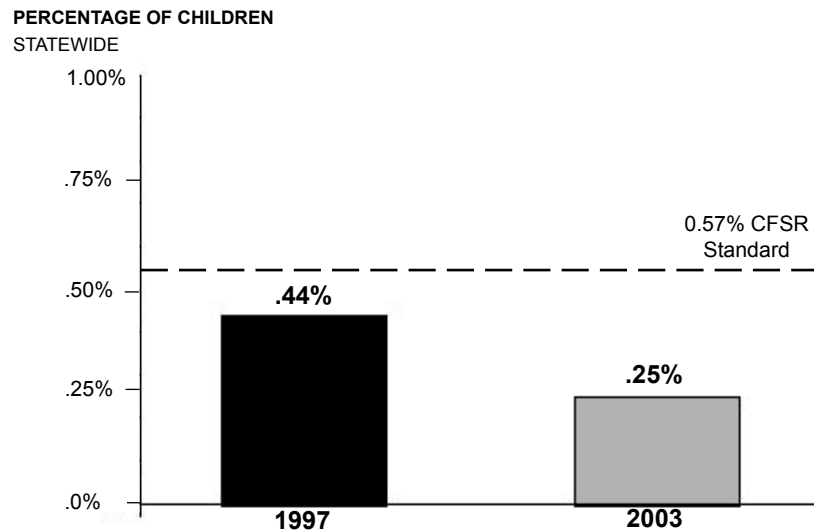


## Percentage of children who experienced maltreatment in foster care

CPOE Indicator & Measure	<b>4C - Safety</b>
CFSR Standard	<b>.57% or less</b>
Time Periods Measured	<b>July 1-December 31, 1997 and 2003</b>

### WHAT DOES THE DATA REVEAL?

The chart below shows the percentage of children who were in foster care during the reporting period and were found to be victims of maltreatment. A child is considered a victim of maltreatment if the perpetrator was a foster care parent or residential facility staff. The CFSR Standard is 0.57% or less children will experience maltreatment in foster care. Overall, the percentage of children experiencing maltreatment in foster care decreased from 1997 to 2003.

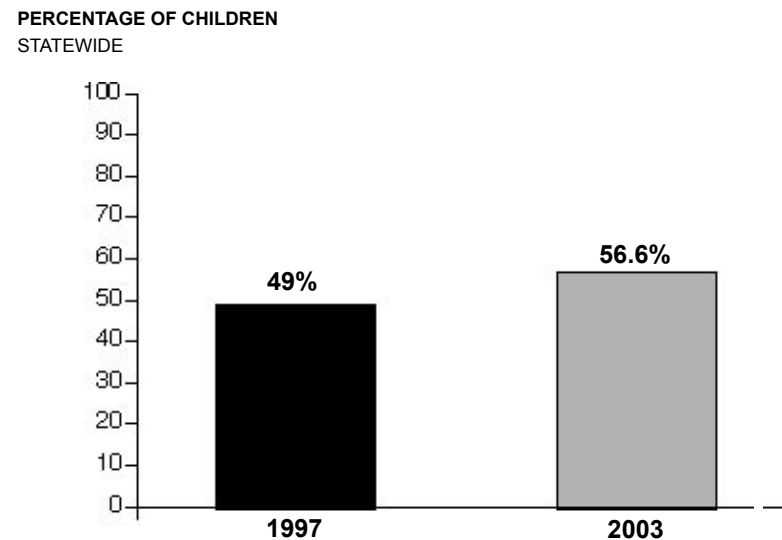


## Percentage of children remaining in out-of-home placement after six months

CPOE Indicator & Measure	<b>5A - Permanency</b>
CFSR Standard	<b>NA</b>
Time Periods Measured	<b>January 1-June 30, 1997 and 2003</b>

### WHAT DOES THE DATA REVEAL?

The graph reports the percentage of children still in placement outside of their birth or legal custodian homes and under the supervision of public children services agencies after six months. Less than half of the children placed in out-of-home care return home, or enter adoptive or kinship homes within six months. There was a slight increase in the percentage of children remaining in out-of-home care between 1997 and 2003 statewide. There is no CFSR Standard for this indicator.



## Percentage of children who never move during their out-of-home placement

CPOE Indicator & Measure **6A - Permanency**

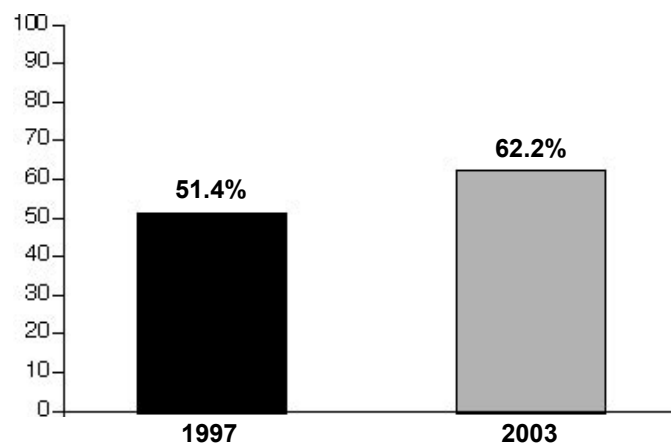
CFSR Standard **NA**

Time Periods Measured **January 1-June 30, 1997 and 2003**

### WHAT DOES THE DATA REVEAL?

The majority of children in out-of-home placement are not moved during their out-of-home placement. The graph reports that the percentage of children who do not experience any moves while in placement increased from 1997 to 2003. This increase translates into greater stability and better quality of life for the children in placement. Each placement move, such as foster to foster, or foster to adoptive, relative or residential center (excluding returning home) is considered a placement move. There is no CFSR Standard for this CPOE indicator.

PERCENTAGE OF CHILDREN STATEWIDE



## Percentage of children who experienced two foster care placements or less

CPOE Indicator & Measure **6C - Permanency**

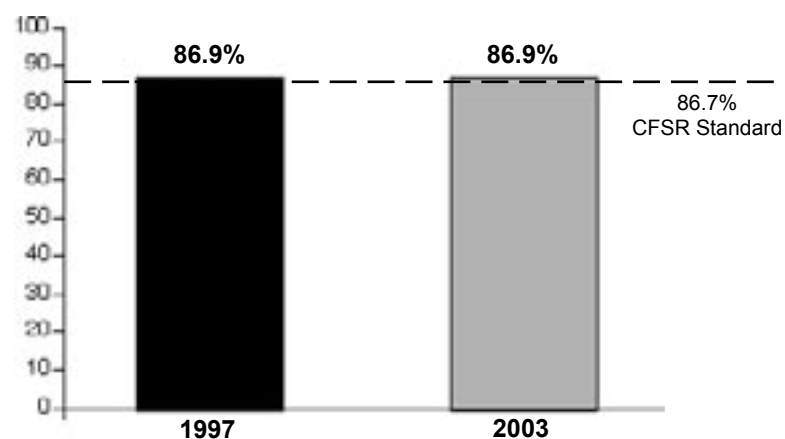
CFSR Standard **86.7% or more**

Time Periods Measured **July 1-December 31, 1997 and 2003**

### WHAT DOES THE DATA REVEAL?

The chart below shows the percentage of children in foster care placement for less than 12 months who were not in more than two placement settings. The CFSR Standard is that 86.7% of children or more must experience no more than two placements for foster care stability. There was no percentage change from 1997 to 2003.

PERCENTAGE OF CHILDREN STATEWIDE



## Percentage of children who reenter foster care within one year of leaving care

CPOE Indicator & Measure **7B - Safety/Permanency**

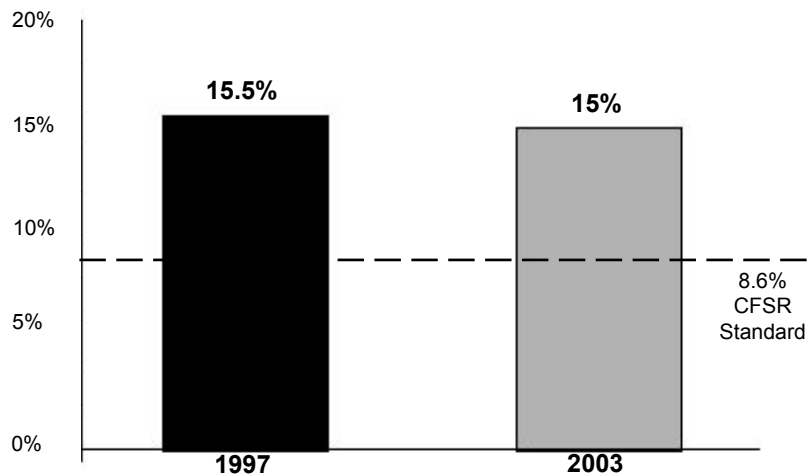
CFSR Standard **8.6% or less**

Time Periods Measured **July 1-December 31, 1997 and 2003**

### WHAT DOES THE DATA REVEAL?

The graph reports the percentage of children who left foster care placement, and within 12 months of exiting care, reentered into foster care placements. There was a slight decrease from 1997 to 2003. The CFSR Standard is 8.6% or less for children reentering foster care within 12 months after exiting care.

PERCENTAGE OF CHILDREN STATEWIDE



## Percentage of children leaving placement, by reason of custody termination

CPOE Indicator & Measure **12 - Permanency**

CFSR Standard **NA**

Time Periods Measured **July-December 2003**

### WHAT DOES THE DATA REVEAL?

The chart reveals the reasons why children leave placement as a percentage of all children leaving custody during that time period.

#### DEFINITIONS

**Guardianship established** – When children leave care because they are placed with a legal guardian.

**Reunification** – Children are reunited with their families/care-takers in accordance with agency recommendation.

**Aging out** – Children age out of the system.

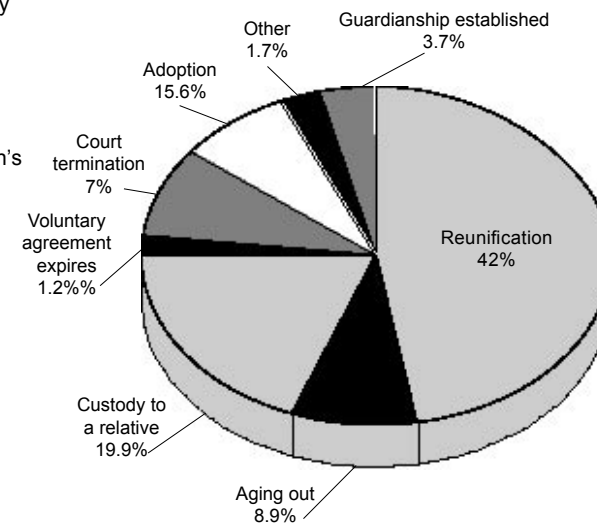
**Custody to a relative** – Children's legal custody is awarded to a relative.

**Voluntary agreement expires** – Children leave care due to termination or expiration of a voluntary agreement.

**Court termination** – Children leave care not in accordance with the agency's recommendation.

**Adoption** – Adoptions are finalized.

**Other** – Includes appeal dispositions when children enter custody of the Ohio Department of Youth Services, or other.



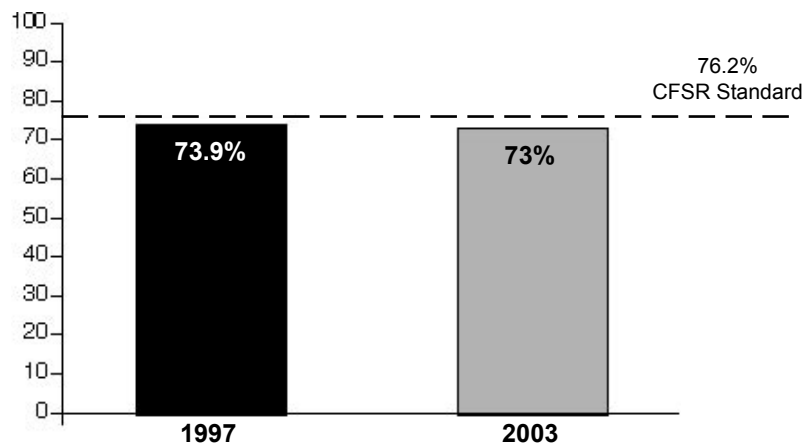
## Percentage of children who return home within 12 months

CPOE Indicator & Measure	<b>13A - Permanency</b>
CFSR Standard	<b>76.2% or more</b>
Time Periods Measured	<b>July 1-December 31, 1997 and 2003</b>

### WHAT DOES THE DATA REVEAL?

The graph reports the percentage of reunifications that occur within 12 months of initial entry into custody. In cases where children are reunified with their birth families, approximately three fourths take place within one year. Statewide, there was a slight decrease in reunifications from 1997 to 2003. The CFSR Standard is that 76.2% or more children should be reunified with their parents or other relatives within 12 months.

PERCENTAGE OF CHILDREN STATEWIDE



## Percentage of adoptions finalized within two years of entering care

CPOE Indicator & Measure	<b>13B - Permanency</b>
CFSR Standard	<b>32% or more</b>
Time Periods Measured	<b>July 1-December 31, 1997 and 2003</b>

### WHAT DOES THE DATA REVEAL?

The graph reports the percentage of adoptions that occur within 24 months of children entering foster care. In cases that result in finalized adoptions, more than one fourth finalize within two years. From 1997-2003, there was a slight increase in adoptions that finalized within two years. The CFSR Standard is that 32% of all children who become available for foster care have their adoptions finalized within two years of entry into care.

PERCENTAGE OF CHILDREN STATEWIDE

